

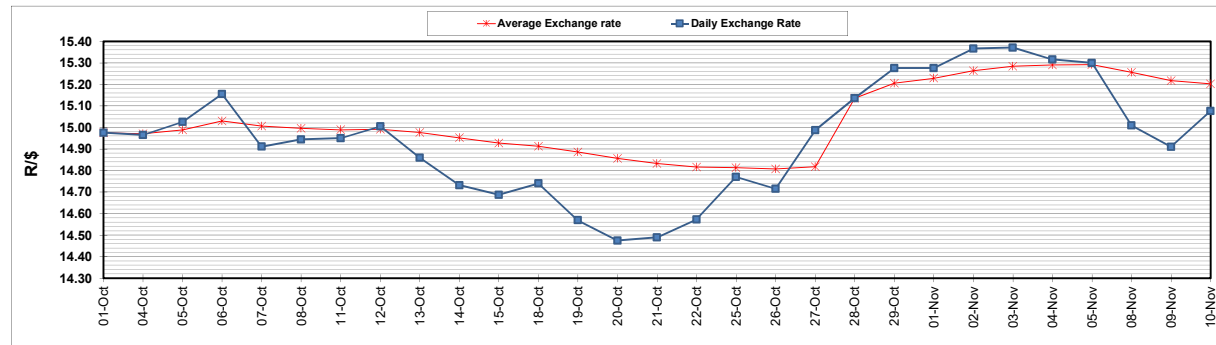
	PETROL 95 ULP	PETROL 93 ULP & LRP	DIESEL 0.05%	DIESEL 0.005%	ILL. PAR.
GAUTENG PUMP PRICE (SA c/l) AS FROM 03/11/2021	1,954.000	1,932.000	-	-	-
WHOLESALE PRICE (SA c/l) AS FROM 03/11/2021	-	-	1,719.980	1,723.380	1,125.488
SINGLE NATIONAL MAXIMUM RETAIL PRICE	-	-	-	-	1,433.000
BASIC FUEL PRICE - 10/11/2021 (SA c/l)	942.076	924.645	944.631	950.071	931.437
PRESS RELEASE CONTRIBUTION TO BFP 03/11/2021 - 10/11/2021 (SA c/l)	937.110	925.110	917.630	921.030	912.128
UNIT OVER/(UNDER) RECOVERY - 10/11/2021 (SA c/l)	(4.966)	0.465	(27.001)	(29.041)	(19.309)
AVERAGE BASIC FUEL PRICE 28/10/2021 - 10/11/2021	970.864	949.688	934.709	940.570	928.116
AVERAGE UNIT OVER/(UNDER) RECOVERY 28/10/2021 - 10/11/2021	(81.273)	(72.099)	(75.479)	(77.939)	(73.988)

ANALYSIS MOVEMENT OF AVERAGE OVER/(UNDER) RECOVERY

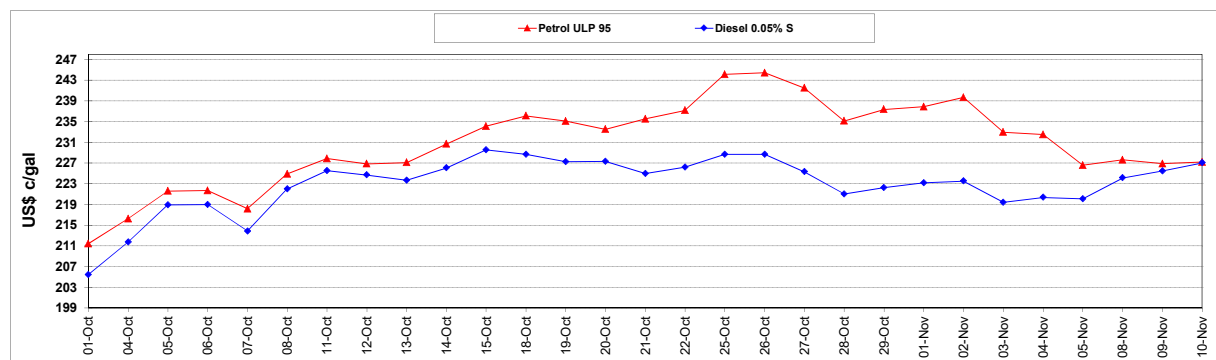
	PETROL 95	PETROL 93	DIESEL 0.05%	DIESEL 0.005%	ILL. PAR.
- MOVEMENT IN INTERNATIONAL PRODUCT PRICES	(56.637)	(47.999)	(51.760)	(54.072)	(50.436)
- MOVEMENT IN EXCHANGE RATE	(24.637)	(24.099)	(23.719)	(23.868)	(23.552)
AVERAGE UNIT OVER/(UNDER) RECOVERY 28/10/2021 - 10/11/2021	(81.273)	(72.099)	(75.479)	(77.939)	(73.988)

R/\$ EXCHANGE RATE - (R/\$15.0770 - 10/11/2021)

EXCHANGE RATE USED IN BASIC FUEL PRICE



INTERNATIONAL PRODUCT PRICES OF BASKET USED IN BASIC FUEL PRICE



BASIC FUEL PRICE IN SA CENTS PER LITRE

